



Phase II Municipalities PEP Reporting

On behalf of:

Burton
Davison Twp.
Flint Twp.
Genesee County
Mt. Morris
Vienna Twp.

Clio
Fenton
Flushing
Grand Blanc
Mt Morris Twp.

Davison
Fenton Twp.
Genesee Twp.
Linden
Swartz Creek

***November 1, 2017 – March 1, 2020
Reporting Period***

Prepared by:

***The Genesee County Drain Commissioner SWM
On behalf of Genesee County and contracted Communities***

This report summarizes activities completed for the period from November 1, 2017, to March 1, 2020, by the Genesee County Drain Commissioner's Office and the contracted Phase II Municipalities to meet the requirements of their National Pollutant Discharge Elimination System (NPDES) permit. This report is broken into sections to coincide with the MI Waters website.

- PPP
- PEP- Public Education Activities
- IDEP
- General Permit Requirements

Permit Requirements

- **A.** Promote public responsibility and stewardship in the applicant's watershed(s).
- **B.** Inform and educate the public about the connection of the MS4 to area waterbodies and the potential impacts discharges could have on surface waters of the state.
- **C.** Educate the public on illicit discharges and promote public reporting of illicit discharges and improper disposal of materials into the MS4.
- **D.** Promote preferred cleaning materials and procedures for car, pavement, and power washing.
- **E.** Inform and educate the public on proper application and disposal of pesticides, herbicides, and fertilizers.
- **F.** Promote proper disposal practices for grass clippings, leaf litter, and animal wastes that may enter into the MS4.
- **G.** Identify and promote the availability, location, and requirements of facilities for collection or disposal of household hazardous wastes, travel trailer sanitary wastes, chemicals, and motor vehicle fluids.
- **H.** Inform and educate the public on proper septic system care and maintenance, and how to recognize system failure.
- **I.** Educate the public on, and promote the benefits of, green infrastructure and Low Impact Development.
- **J.** Promote methods for managing riparian lands to protect water quality.
- **K.** Identify and educate commercial, industrial, and institutional entities likely to contribute pollutants to stormwater runoff.

Partnerships

Flint River Watershed Coalition: On behalf of the of the Phase II permittees, the Flint River Watershed Coalition (FRWC) was contracted by the GCDC to provide several services, including:

- *Speaker Materials and Presentations:* PowerPoint presentations on storm water education for adult audiences such as municipal officials, rotary clubs, neighborhood associations, lake associations, etc.
- Hosting *canoe trips* on the Flint River described in the Activities Update.
- *Global Rivers Environmental Education Network (GREEN):* described in the Activities Update. *NOTE although this program is part of Monitoring and Mapping, there are education components to it.*
- *Macroinvertebrate Monitoring Program:* described in the Activities Update. *NOTE although this program is part of Monitoring and Mapping, there are education components to it.*
- The FRWC was involved in the *Storm Drain Stenciling* program described in the Activities Update.

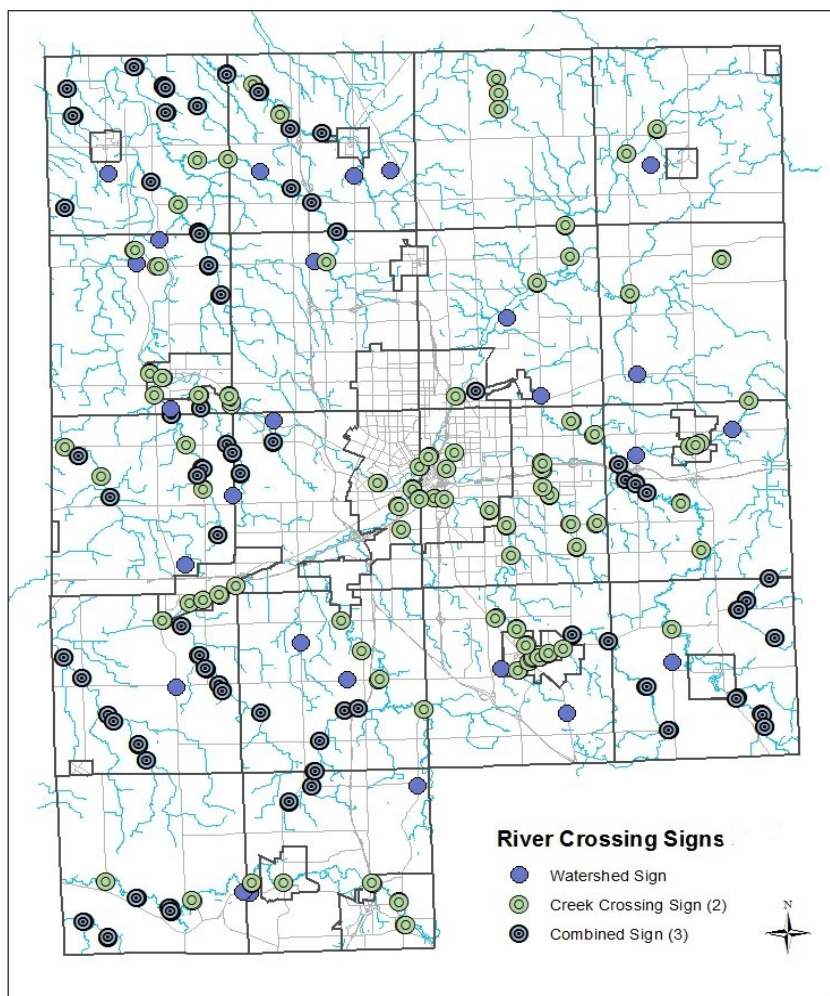
Genesee Conservation District: On behalf of the of the Phase II permittees, the GCD was contracted by the GCDC to provide several services, including:

- The GCD was involved in the *Storm Drain Stenciling* program described in the Activities Update.
- Operate and staff the "Our Water" Information *Display booth* at the County Fair and other events described in the Activities Update.
- The GCD continues to *educate children* on storm water issues using the Enviroscape and craft projects that reinforce storm water messages as described in the Activities Update.
- *Facilitate and staff display booth at public events:* GCD schedules the display booth. Provide staff or training for volunteers.

Reporting Period update of implementation of Table 2

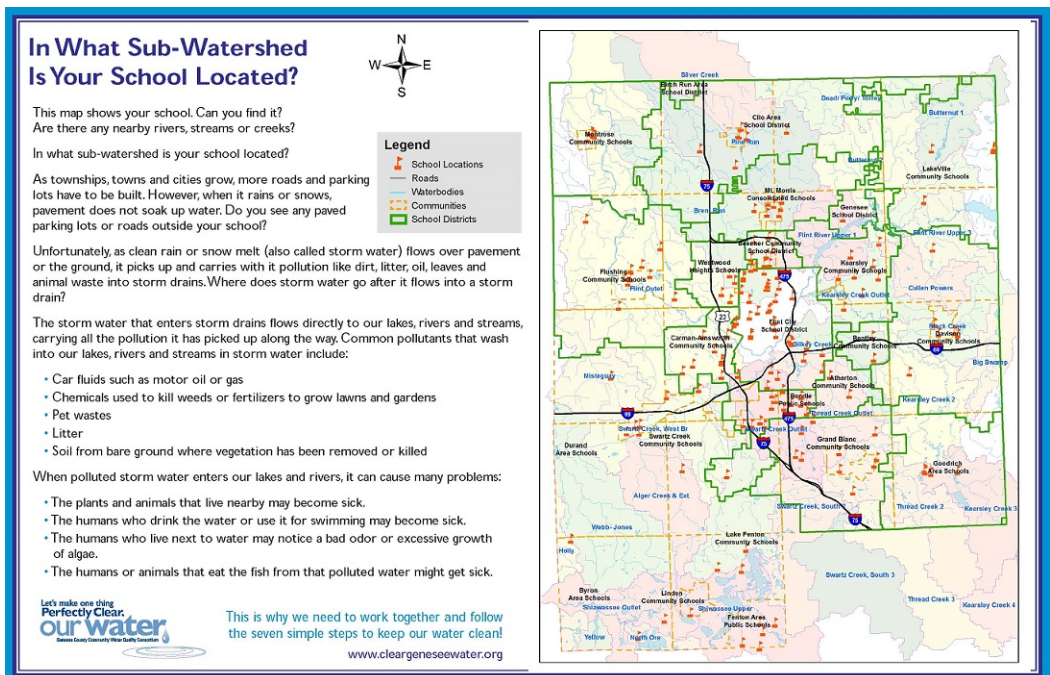
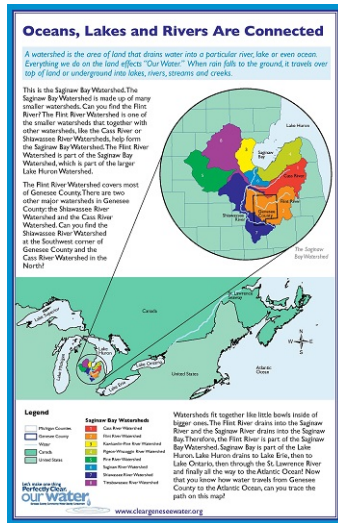
Road and Stream Crossings and Watershed Signs:

- Signage installation has met target of 200 sites. There are 407 signs that were placed.
- Our water Program works with Road Commission to maintain signs.
- 1 sign since Oct 2017 had to be reset.
- Signage increases public awareness.
- Survey in 2017 showed that 223 of 333 responses answered correctly to the question “Do you know where the rain water goes when it runs off your property?” That is compared to the 2006 survey where only 31 out of 308 answered correctly.
- Private organizations have been placing adopt a river signs along the Shiawassee



Watershed Maps:

- Series of 8 posters
- For school education
- Distributed in last reporting cycle
- Available electronically or hard copy on request
- Below are examples of #1, #2 & #4



Benthic Monitoring Program

- Bi-annual testing is performed by volunteers
- FRWC provides coordination and training
- Testing is done at 30 sites throughout the Flint Watershed (16 within Genesee County)
- 2 sites were added for the Shiawassee River located within Genesee County
- Data collected will be used with other information to provide an assessment of water quality
- Project GREEN also introduces Benthic monitoring to the students.
- Detailed information on sites tested and survey are in attachment named 2017-2020 Effect

Project GREEN Water Quality Monitoring Program

GREEN Schools



2018 Participating GREEN Schools

<p>Atherton Jr./Sr. High School Teacher: Ashley Booker Mentor: Madeline Mahnick</p>	<p>Genesee Career Institute Teacher: Tracey Groom Mentor: Darren Bagley</p>	<p>Mt. Morris Junior High School Teachers: Nick Carr, Kim McCormick, Mentor: Tom Jones</p>
<p>Bendle High School Teacher: Todd Bardon Mentor: Jaime Welch</p>	<p>Imlay City Middle School Teacher: Kim Perreault</p>	<p>Northbranch High School Teacher: Carrie Wenta Mentor: Lee Ann Slosar</p>
<p>Birch Run—Marshall Greene Middle School Teacher: Todd Snellenberger Mentor: Autumn Mitchell</p>	<p>Kearsley—Armstrong Middle School Teachers: Julian Jarrett, Diana Bowman, Kathy Hill Mentor: John Maksimchuk</p>	<p>Northbranch Middle School Teacher: Anne Sherrieb Mentor: Lee Ann Slosar</p>
<p>Carman-Ainsworth Baker Career Academy Teacher: Trish Miller Mentor: Tina Burry</p>	<p>Lakeville Middle School Teacher: Patrick Burris Mentor: Alex Thibeault</p>	<p>Powers High School Teacher: Julie Lawrence Mentor: Tom Hutchings</p>
<p>Clio—Carter Middle School Teachers: Ryan Niemi Mentor: Craig Buike</p>	<p>Lapeer—Chatfield School Teacher: Annette Young Mentor: Autumn Mitchell</p>	<p>Swartz Creek Middle School Teacher: Brandolyn Forbes Mentors: Marv Asbury</p>
<p>Davison Middle School Teacher: Jody Kosira</p>	<p>Montrose—Kuehn-Haven Middle School Teachers: Kelly Sanborn, Tammy Belson Mentor: Autumn Mitchell</p>	<p>Westwood Heights—Hamady High School Teacher: James Hall Mentor: Brent Cousino</p>
<p>Flint Northwestern Teacher: Mary Ann Kost Mentor: Emily McDonald</p>		

Pictured above: Students from Kuehn-Haven Middle School in Montrose on testing day

7

- Annual testing of the Flint and Shiawassee Rivers by students
- Mentors go into the classrooms and talk about water health, watersheds, how we impact water
- Teachers and mentors take students out to river to do chemical testing on water
- Testing results are compiled and analyzed
- Students get together at a symposium and share results in presentations drawing conclusions to why the results show good or bad results. Additional educational opportunities are available at the event through presentations by mentors.

Breakdown of Project Green Schools in Fiscal Year 2017-18

School	Location	Students located within:
Armstrong Middle School	Crampton Drain at Kearsley Armstrong	Richfield Twp., Davison Twp.
Atherton High School	Pierson Drain at Atherton HS	City of Burton
Bendle High School	Thread Creek at Bristol Road	City of Burton
Carman Ainsworth – Baker	Carman Creek Behind Carman Ainsworth- Baker	County Wide
Carter Middle School	Clio Bike Path @ Clio Park	City of Clio, Vienna Twp. Thetford & Montrose Twp.
Chatfield	Farmers Creek	Lapeer County
Davison Middle School	Davison Black Creek (Class A)	Richfield Twp., Davison Twp., City of Burton
Davison Middle School	Davison Black Creek (Class B)	Richfield Twp., Davison Twp., City of Burton
Davison Middle School	Davison Kearsley Creek (Class C)	Richfield Twp., Davison Twp., City of Burton
Genesee Area Skill Center	Thread Creek at Rust Park in Grand Blanc	County Wide
Hamady High School	Clio Bike Path @ Jennings/Vienna	Mt. Morris Twp., Mt Morris, Genesee Twp.,
LakeVille Middle School	Holloway Reservoir Columbiaville	Forest Twp., Richfield Twp.
Marshall Greene Middle School	Silver Creek	Saginaw County, Montrose Twp.
Montrose Middle School	Flint River @ Barber Memorial Park	Montrose Twp., Montrose
Mt. Morris Middle School	Flint River @ Steeping Stone Falls	Mt. Morris Twp., City of Mt. Morris, Genesee Twp., Vienna Twp., Thetford Twp.
North Branch High School	Bottom Creek	Lapeer County
North Branch Middle School	North Branch Middle School Drain	Lapeer County
Northwestern Academy	Vietnam Veterans' Memorial Park	City of Flint
Powers Catholic High School	Swartz Creek south of Powers	County Wide
Swartz Creek Middle School	West Branch Swartz Creek near SCMS	Clayton Twp., Gaines Twp., City of Swartz Creek., Flint Twp., Mundy Twp.

NOTE: many teachers had multiple classes participating

Breakdown of Project Green Schools in Fiscal Year 2018-19

School	Number students	Students located within:
Atherton Jr./Sr. High School	75	City of Burton
Bentley High School	19	
Carman-Ainsworth Baker Career Academy	30	County Wide
Carter Middle School	30	City of Clio, Vienna Twp. Thetford & Montrose Twp.
Davison Middle School	105	Richfield Twp., Davison Twp., City of Burton
Flushing - Springview Elementary	30	Flushing, Flushing Twp., Mt. Morris Twp., Clayton Twp.
Genesee Career Institute	40	County Wide
Genesee High School	175	Genesee Twp., Mt. Morris Twp.
Kearsley Armstrong Middle School	75	Genesee Twp., Richfield Twp.
Grand Blanc East Middle School	363	City of Grand Blanc, Grand Blanc Twp., Atlas Twp.
Grand Blanc West Middle School	363	City of Grand Blanc, Grand Blanc Twp., Atlas Twp.
Holmes STEM Academy	60	County Wide
LakeVille Middle School	70	Forest Twp., Richfield Twp.
Montrose - Kuehn Haven Middle School	112	Montrose Twp., Montrose
Mt. Morris Junior High School	20	Mt. Morris Twp., City of Mt. Morris, Genesee Twp., Vienna Twp., Thetford Twp.
Powers Catholic High School	125	County Wide
Swartz Creek Middle School	60	Swartz Creek, Clayton Twp., Gaines Twp.
Westwood Heights - Hamady High School	100	Mt. Morris Twp., Mt Morris, Genesee Twp.,

NOTE: many teachers had multiple classes participating

2019 Symposium Breakout sessions

- **Vampires of the Great Lakes**—Heather Dawson—University of Michigan - Flint
These vampire fish are one of the most devastating invasive species to the Great Lakes ecosystem, and one of the only ones we can control.
- **Sewer CSI**—Tom Hutchings and Eric Brubaker—City of Flint Water Pollution Control Division
How does the City of Flint manage surface water pollution? Interact with the experts and ask the tough questions.
- **Runyaking for Liberty**—Riley McLincha—Long distance running/kayaking enthusiast
A living legend (and Wizard of Clio) shares the excitement of paddling and running from the Flint River to the Statue of Liberty through song and show!
- **Incredible, Edible Aquifers**—Heidi Locke—Michigan State University Extension, Genesee County
Sink your teeth into some SWEET underground water storage knowledge.
- **Wetland Animals**—For-Mar Education Staff, Genesee County Parks
Join For-Mar staff for an up close and personal look at some of the reasons we work so hard at conservation education through these live animal presentations.
- **Creek Critters**—Stephanie Nummer—University of Toledo Department of Environmental Sciences
Get your hands on lots of little, living critters that help confirm what we've learned—that the water quality of the Flint River is actually pretty good!
- **Stash the Trash to Save the Earth**—
Cody Roblyer—Genesee County Metropolitan Planning Commission & Jef Johnson—Genesee Conservation District
Are you doing what is best with your waste? Participate in a friendly competition to stash the trash in the right places.
- **Map Your Watershed Computer Lab**—Sara McDonnell and Troy Rosencrants—UM Flint Outreach Office
Explore the use of Geographic Information Systems (GIS) through an online mapping tool mapflint.org created by UM-Flint. Learn how to be a watershed detective and create your own watershed map.
- **Awakening Your Connection to Plants**— Dr. Jim Cohen—Kettering University Biology Department
Take a closer look at plants you see everyday and learn about interesting features of some you rarely notice.
- **Rats in Your Drinking Water**—Darren Bagley— Michigan State University Extension, Genesee County
Where on earth has your drinking water been and what can you do to keep it safe?
- **Chevy Commons: Green Tour**—Ryan Londrigan, Paul Bucholtz—MI Dept. of Environment, Great Lakes, and Energy
Double Session. Walk to a nearby park to learn about the history and revitalization of this former industrial site.
- **Geocaching**—For-Mar Education Staff, Genesee County Parks
Double Session. Use handheld GPS units to explore outdoors in a digital game of hide and seek popular around the world.
- **Identification of Bacteria in the Environment** — Dr. Michelle Ammerman—Kettering University
Use modern tools in the Kettering University Biology Lab to identify what bacteria are found in the environment
- **Migration Mayhem**—Natalie Elkins, Tracy Page—Michigan Department of Natural Resources (DNR)
Join Michigan DNR staff to actively explore bird and fish migration while discovering human impacts on their life cycles.

Display Booth for Events

- Conservation district takes an education booth to events throughout the County and year
- Staff/ volunteer engage the public by offering them a giveaway if they answer a question
- Right or wrong it allows the Staff a chance to impart water education and a pamphlet
- Mt. Morris Twp., Atlas Twp. and GCDC-SWM staff volunteer in both 2018 and 2019 County Fair

Breakdown of Events in Fiscal Years 2017-2020

Event	Dates	Number of individuals engaged
Home and Garden Show	4/7/18 -4/8/18	352
Genesee STEM Academy Open House	8/1/18	120
Back to the Bricks	8/1/18-8/2/18	127
National Night out	8/8/18	247
Genesee County Fair	8/20/18-8/26/18	711
Crim Health and Fitness Expo	8/23/18	796
Davison Farmer's Market	9/20/18 & 9/27/18	171
Flushing Harvest Festival	9/29/18	340
Home and Garden Show	3/30/19-3/31/19	355
Earth Day	4/13/19	131
National Night out	8/6/19	241
Grand Blanc Food Truck Festival	8/9/19	140
Back to the Bricks	8/17/19	158
Genesee County Fair	8/9/19-8/25/19	1141
Davison Farmer's Market	9/24/19	68
Genesee STEM Academy Open House	9/25/19	148
Flushing Harvest Festival	9/28/19	252
Women in Ag Harvest Festival	10/25/2019	99

Breakdown by Community the individual lives - Fiscal Years 2017-2020

•	NUMBER OF INDIVIDUALS ENGAGED
Burton	282
Clio	229
Davison	297
Fenton	60
Flint	1094
Flushing	467
Grand Blanc	407
Linden	33
Montrose	121
Mt. Morris	194
Swartz Creek	259
• Argentine Twp.	6
Atlas Twp.	11
Clayton Twp.	13
Davison Twp.	87
Fenton Twp.	11
Flint Twp.	530
Flushing Twp.	116
Forest Twp.	19
Gaines Twp.	38

Genesee Twp.	154
Grand Blanc Twp.	160
Montrose Twp.	18
Mt. Morris Twp.	117
Mundy Twp.	26
Richfield Twp.	38
Thetford Twp.	14
Vienna Twp.	20

*Staff / Volunteers also spoke to people from other Counties and other States

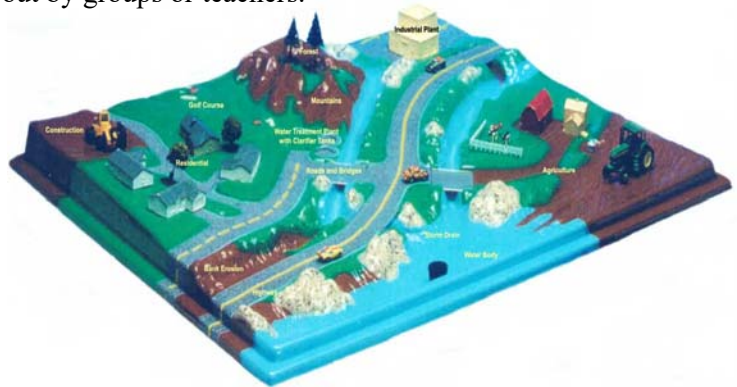
Our Water Webpage

- www.ClearGeneseeWater.org
- Hosted & updated at GCDC-SWM Office
- Content is set around the “Seven Storm Water elements”
- Additional content on www.GCDCSWM.com the Drain Commissioner’s website for permittees
- Survey available to be taken online. *Updates to survey are needed.



Conservation District Youth Education

- Conservation District Staff goes into Schools to do youth education
- Programs can include Enviroscares or other games:
 - Online Games (DiscoverWater.org)
 - Water cycle relay race
 - Filter the Pollution
 - A-maze-ing water
 - Water trivia games (who wants to be a millionaire, a watershed game, the environmental council, conservation Style, and environmental jeopardy)
- GCDC-SWM has four “Enviroscape” interactive models that demonstrate how pollutants can reach bodies of water. These can be checked out by groups or teachers.



Breakdown of Conservation District Water Quality Presentations in Fiscal Years 2017-2020

Month	Event	School aged children reached:	Community Children are from:
10/13/17-5/30/18	Spring Elementary	20-30 per class 30 classes	Swartz Creek, Clayton Twp., Gaines Twp., Flint Twp.
10/17/17-5/8/18	Genesee Stem Academy	20-30 per class 126 classes	County Wide
4/13/18-6/1/18	Moore Elementary	20-30 per class 24 classes	Mt. Morris, Mt. Morris Twp., Genesee Twp.
4/17/18	Carmen-Ainsworth Early College	20-30 per class 1 class	Flint Twp., Mundy Twp., Clayton Twp.
6/20/18-6/27/18	Montague Elementary	20-30 per class 8 classes	Mt. Morris, Mt. Morris Twp., Genesee Twp.
6/26/18-8/7/18	Bendle Elementary	20-30 per class 5 classes	Burton, Grand Blanc Twp., Flint Twp., Mundy Twp.
7/11/18	Montague Elementary	20-30 per class 4 classes	Mt. Morris, Mt. Morris Twp., Genesee Twp.
10/2/18-10/3/18	Hamady High School	20-30 per class 6 classes	Mt. Morris Twp., Genesee Twp.
11/8/18-12/13/18	Moore Elementary	20-30 per class 15 classes	Mt. Morris, Mt. Morris Twp., Genesee Twp.
11/13/18-12/11/18	Freeman Elementary	20-30 per class 8 classes	Burton
11/13/18-12/12/18	Genesee Stem Academy	20-30 per class 27 classes	County Wide
1/8/19-3/5/19	Freeman Elementary	20-30 per class 8 classes	Burton

Month	Event	School aged children reached:	Community Children are from:
1/8/19-05/21/19	Genesee Stem Academy	20-30 per class 71 classes	County Wide
1/10/19-5/16/19	Moore Elementary	20-30 per class 29 classes	Swartz Creek, Clayton Twp., Gaines Twp., Flint Twp.
3/8/19-5/17/19	Spring Elementary	20-30 per class 18 classes	Swartz Creek, Clayton Twp., Gaines Twp., Flint Twp.
5/20/19	Hamady High School	20-30 per class 2 classes	Mt. Morris Twp., Genesee Twp.
5/30/19	FRWC GREEN Student Summit	20-30 per class 3 classes	County Wide
6/11/19	Hill Elementary	20-30 per class 2 classes	Davison, Davison Twp., Richfield Twp.
6/13/19-6/27/19	Montague Elementary	20-30 per class 12 classes	Mt. Morris, Mt. Morris Twp., Genesee Twp.
6/25/19-7/23/19	Bendle Elementary	20-30 per class 8 classes	Burton, Grand Blanc Twp., Flint Twp., Mundy Twp.
11/14/19-01/23/20	Freeman Elementary	20-30 per class 3 classes	Burton
12/06/19	Hill Elementary	20-30- per class 2 classes	Davison
12/17/19-02/25/20	Moore Elementary	20-30 per class 55 classes	Mt.Morris
01/15/20-02/13/20	Genesee STEM Academy	20-30 per class 31 classes	Flint

Genesee County Nests the above Schools within Genesee County although they are not listed in above table.

Enviroscape was checked out from GCDCSWM on the following dates:

4/11/19-6/7/19	GCP training Afterschool Programs	160 adults 80 children	Mt. Morris Twp., Mt Morris
6/7/19-6/18/19	Neighborhood engagement	2 adults 1 child	City Flint

Catch basin Stenciling / Markers Program

- 2 programs
 - FRWC and Conservation District coordinate groups, train on how and why they do stenciling. Document the where and how many.
 - Volunteers do the actual stenciling on neighborhood streets and parking lots.
 - Volunteers also distribute door to door hangers with storm water information.
 - GCDC-SWM staff places markers on drainage inlets (rear yard and road ditches)
 - Also stencil road inlets where staff had cleaned sumps of sediment and debris
 - Staff has placed over 3250 markers since program start to February 26, 2020



Breakdown of Conservation District Stencil Program in Fiscal Years 2017-2020

Date	Location	Participants	Door Hanger / Stencils
5/14/18	Swartz Creek	7	150 / 49
5/14/18	Swartz Creek	7	90 / 24
5/14/18	Swartz Creek	7	22 / 11
5/23/18	Mt. Morris Twp.	6	17 / 13
8/2/18	Burton	9	85 / 30
9/6/18	Flint Twp.	3	32 / 13
9/24/18	Flint Twp.	3	97 / 32
9/24/18	Grand Blanc	2	26 / 5
5/16/19	Mt. Morris Twp.	11	55 / 10
6/18/19	Grand Blanc	3	58 / 35
6/25/19	Grand Blanc	3	45 / 24
7/24/19	Grand Blanc	3	80 / 30
7/30/19	Flint Twp.	4	39 / 23
8/5/19	Flint Twp.	8	37 / 12
9/19/19	Grand Blanc	3	70 / 25
9/24/19	Grand Blanc	3	45 / 17

Breakdown of FRWC Stencil Program in Fiscal Years 2017-2020

Date	Location	Participants	Door Hanger / Stencils
6/8/18	City of Flint	20	294 / 141
6/8/18	City of Flint	10	176 / 61
6/8/18	City of Flint	15	104 / 65
6/8/18	City of Flint	10	120 / 44
9/7/18	Swartz Creek	13	74 / 37
9/8/18	Burton	6	79 / 62
9/10/18	Davison	23	82 / 47
9/17/18	Davison	20	291 / 97
9/24/18	Davison	20	110 / 11
10/1/18	Davison	18	240 / 120
10/26/18	Burton	13	237 / 58
5/6/19	Clio	21	97 / 31
5/21/19	Flint Twp.	20	46 / 26
8/6/19	Swartz Creek	4	86 / 19
8/28/19	Swartz Creek	4	82 / 19
9/16/19	Davison	29	215 / 66
9/23/19	Davison	20	164 / 68
9/28/19	Burton	10	200 / 60
9/28/19	Flushing	2	70 / 12
9/30/19	Burton	5	120 / 45
9/30/19	Davison	20	155 / 65



Distribute Brochures Promoting the 7 Simple Steps:

- An educational brochure was developed to provide information about EPA’s seven mandated elements of storm water education
- 5,000 brochures were printed in November 2006, and 10,000 reprints were made in 2009 and 2013.
- Brochures are handed out at events
- Brochures are available to public at municipal buildings (reported on by each permittee)

Speaker Bureau

- Modular Power Point presentation was developed and used by FRWC and GCDC-SWM on a multitude of storm water topics
- Water topics can be mixed and matched to customize talk both in content and length
- This program is targeted to talk to residents, groups, associations and businesses

Breakdown of FRWC Speaker Program in Fiscal Years 2017-2020

Date	Location	Participants
3/3/18	Quite Water Symposium (MSU)	100
3/31/18	Birch Run Expo	100+
5/1/18	Burton Police Dept.	25
5/8/18	Community Playlist- Radio WFOV92.1	? 10 mile broadcast area
5/9/18	Flint Public Library	30
8/27/18	Genesee High School	41
9/12/18	Mott Community College	15
10/29/18	Northville Library	20

Date	Location	Participants
1/17/19	Baker Campus- Youth Quest	100
2/8/19	Flushing Spring view Elementary	30
3/6/19	Saul & Power Squadron- Burton	25
3/20/19	Davison High School	300
4/13/19	Mott Community College	100+
4/29/19	Dye Elementary- Flint Twp.	30
6/18/19	Silver Creek Club house	20

On 10/7/2017 GCDC-SWM staff, Bill Poster did a presentation “Leave No Trace Workshop” for 30 individuals. There were (16) webelos (8) boy scouts & (6) parents. Three (3) were from Grand Blanc, eight (8) from Grand Blanc Twp. and one (1) from Mundy Twp.

Articles & Newsletters

- Newsletters are available to the public at the GCDC-SWM counter and on the GCDCWWM.com website, the purpose is to keep the Communities updated with the changes to the permit program.
- Articles are published on Water quality in newsletters of FRWC, Conservation District, Municipalities (reported on by each permittee)
 - FRWC distributes to their mailing list of over 2000, available on their website, and referenced in Facebook
 - Conservation District distributes to its mailing list of over 2500.

Advertise Household Hazardous Waste Events

- The Household Hazardous Waste Events is financially supported by Genesee County and various Communities (reported on by each permittee)
- PEP program helps distribute information to make public aware of availability and proper disposal of household hazardous waste to keep it out of the environment and landfills.
- Genesee County distributes flyers to all users, over 2000 individuals. Most departments post notice where it can be seen by public. Many communities also post flyers where it can be seen. (reported on by each permittee)



Educational Material- Septic Booklet

- Information to help educate septic system owners on proper maintenance and practices
- Copies have been provided for distribution to:
 - Genesee County Health Department
 - Interested communities (Not all communities have residents with septic systems.)
 - Realtors association
 - Available at events for interested residents
- The number of parcels County wide that are not vacant/farmland nor have access to sanitary are small. This makes it hard to evaluate the program.
- IDEP program has more issues with cross connections that no one know exist rather than failed septic.

Canoe Trips- Paddles

- The Flint River has suffered historically from a bad reputation. Through the FRWC, several paddles are held on various locations of the Flint River.
- Before the paddle FRWC has water quality education as well as safety on the water education.
- Provides easy access to residents that would not normally get on the water or would drive hours to Canoe/Kayak on a “clean river” up north.
- Most new paddlers are surprised how beautiful and divers the river is.
- Increased use and access observed. = increased stewardship
- Participants locations show that people are willing to travel to come to the Flint River



Breakdown of FRWC Paddle Program in Fiscal Years 2017-2020

Date	Location	Participants	Participants From (zip code)
6/20/18	Mott Lake	27	Burton, Fenton, Flint, Flushing, Goodrich, Grand Blanc, Mt. Morris
6/22/18	Kettering University	6	Flint and Burton
6/22/18	Mott Lake	12	Burt, Burton, Davison, Lennon, Flint, Fenton, Lake Orion, Millington
6/28/18	Mott Lake	23	Belleville, Burton, Fenton, Flint, Grand Blanc, Highland, Imlay City, Lake Orion, Lapeer, Mt. Morris, Ortonville, Otisville, Swartz Creek
7/12/18	Mott Lake	20	Burton, Fenton, Flint, Flushing, Grand Blanc, Lake Orion, Linden

Date	Location	Participants	Participants From (zip code)
7/19/18	Mitson Landing- Flint Twp.	28	Birch Run, Flint, Attica, Grand Blanc, Lapeer, Metamora, Davison, Waterford, Fenton, Ann Arbor, Saginaw, Chelsea
7/27/18	Mott Lake	10	Davison, Fenton, Flint, Lake Orion
7/27/18	Mott Lake	16	Fenton, Lapeer, Otisville, Flint, Ortonville
8/2/18	Flushing Nature Park	23	Clio, Fenton, Flint, Flushing, Grand Blanc, Lennon, Otisville
8/9/18	Mott Lake	20	Fenton, Flint, Flushing, Grand Blanc, Lake Orion, Ortonville
8/24/18	Mott Lake	10	Burton, Fenton, Flint, Flint Township, Flushing, Grand Blanc, Lake Orion
8/28/18	Mitson Landing- Flint Twp.	12	Attica, Davison, Fenton, Flint, Grand Blanc
9/8/18	Holloway Dam	28	Belleville, Grand Blanc, Fenton, Flint, Flushing, Lennon, Otisville, Swartz Creek
9/15/18	Mitson Landing- Flint Twp.	12	Fenton, Flint, Flushing, Grand Blanc, Swartz Creek
9/27/18	M15 to Irish- Davison	7	Birch Run, Fenton, Flint, Grand Blanc, Ortonville, Otisville
10/6/18	Mitson Landing- Flint Twp.	28	Most from outside Genesee Co
5/15/19	Irish to Mott- Davison	14	Clio, Davison, Fenton, Goodrich, Grand Blanc, Holly, Mt. Morris, Rickland, Swartz Creek
6/6/19	Mott Lake	12	Davisburg, Davison, Fenton, Flint, Flushing, Mt. Morris, St. Claire Shores
6/9/19	Grand Traverse to Mitson	6	Fenton, Flint
6/15/19	Holloway to Irish- Davison	23	Burton, Clio, Davison, Fenton, Flint, Grand Blanc, Lapeer, Otisville, Ortonville
6/19/19	Mitson Landing- Flint Twp.	13	Fenton, Flint, Otisville
6/25/19	Mott Lake	18	Davisburg, Fenton, Flint, Flushing, Grand Blanc, Lapeer
6/26/19	Mott Lake	16	Davisburg, Davison, Fenton, Flint, Flushing, Grand Blanc, Lansing, Lapeer, St. Clair Shores, Whitmore Lake
7/10/19	Flushing Nature Park	26	Davison, Fenton, Flint, Flushing, Grand Blanc, Otisville, Swartz Creek
7/12/19	Mott Lake	18	Burton, Clifford, Davisburg, Fenton, Flint, Flushing, Mt. Morris, St. Claire Shores
7/18/19	Grand Traverse to Mitson	20	Bangor, Cadillac, East Lansing, Fenton, Flint, Gaylord, Haslett, Harrison, Holt, Laingsburg, Lansing, Manton, Mason, Muskegon, St. Johns, Swartz Creek *DNR group

Date	Location	Participants	Participants From (zip code)
7/19/19	Irish to Mott- Davison	17	Birch Run, Burt, Burton, Clarkston, Clio, Davison, Fenton, Flint, Flushing, Lapeer, Oxford *GREEN Teachers
7/23/19	Mott Lake	20	Davisburg, Fenton, Flint, Flushing, Grand Blanc, Millington, Montrose, Lapeer, St. Claire Shores
7/27/19	Flushing Riverview Park	9	Fenton, Flint, Flushing, Otisville
8/3/19	Grand Traverse to Mott Pk	312	Principally Genesee county, plus other parts of the watershed
8/7/19	Grand Traverse To Mitson	21	All Genesee County residents
8/10/19	Mott Lake	23	Burton, Clifford, Davison, Davisburg, Fenton, Flint, Grand Blanc, Hemlock, Mt. Morris, Royal Oak, Saginaw, St. Charles, St. Claire Shores
8/11/19	Flushing Riverview Park	11	Davison, Fenton, Flint, Flushing, Otisville
8/21/19	Flushing Riverview Park	27	Bay City, Burt, Davison, Detroit, Fenton, Flint, Flushing, Grand Blanc, Lapeer, Montrose, Southfield
9/4/19	Grand Traverse To Mitson	8	Davison, Fenton, Flint, Flushing, Grand Blanc, Otisville

Present Information on Proper Disposal of Medications and Personal Care Products on Website

- This information used to be available on Water and Waste website, but the site has been changed during this reporting period.
- GCDCSWM is in the process of having this information provided on www.ClearGeneseeWater.org
- The promoted Household Hazardous Waste events specifically list that they accept aerosols, biomedical sharps and prescription medication as some of the items accepted

Pamphlet for Riparian Landowners

- Most of the pamphlets were distributed in past reporting periods.
- Pamphlets are handed out at events
- Pamphlets are available to public at municipal buildings (reported on by each permittee)
- 5000 Pamphlets have been distributed since start of program

Education Workshop Targeted To Restaurant Waste

- Restaurants have been identified in many IDEP enforcement
- Workshop would target restaurants to educate staff on proper disposal of waste fluids to prevent future illicit discharges
- Program is still in development stage, no workshop has been performed during reporting period. Scheduled for next reporting period

Education Workshop Targeted To Green Infrastructure Design

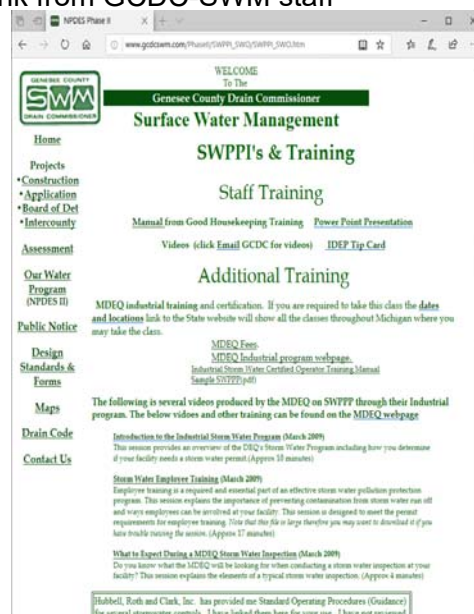
- Engineers and developers have been targeted to help them understand how green infrastructure can be effective in their design
- No workshop has been performed during reporting period. Scheduled for next reporting period

Education Workshop targeted to good housekeeping practices for municipalities

- Provide workshop for municipal staff and their contractors
- Topics to be covered:
 - Spill prevention / Spill Control and Response
 - Vehicle and Equipment Maintenance / Washing
 - Material Storage
 - Waste Management
 - Facility Maintenance
 - Landscape and Grounds Maintenance
 - Illicit Discharge Detection
 - Contracts
- No workshop has been performed during reporting period. Scheduled for next reporting period
- Workshop is transitioning into online video, so permittees may do training on their schedule (reported on by each permittee)

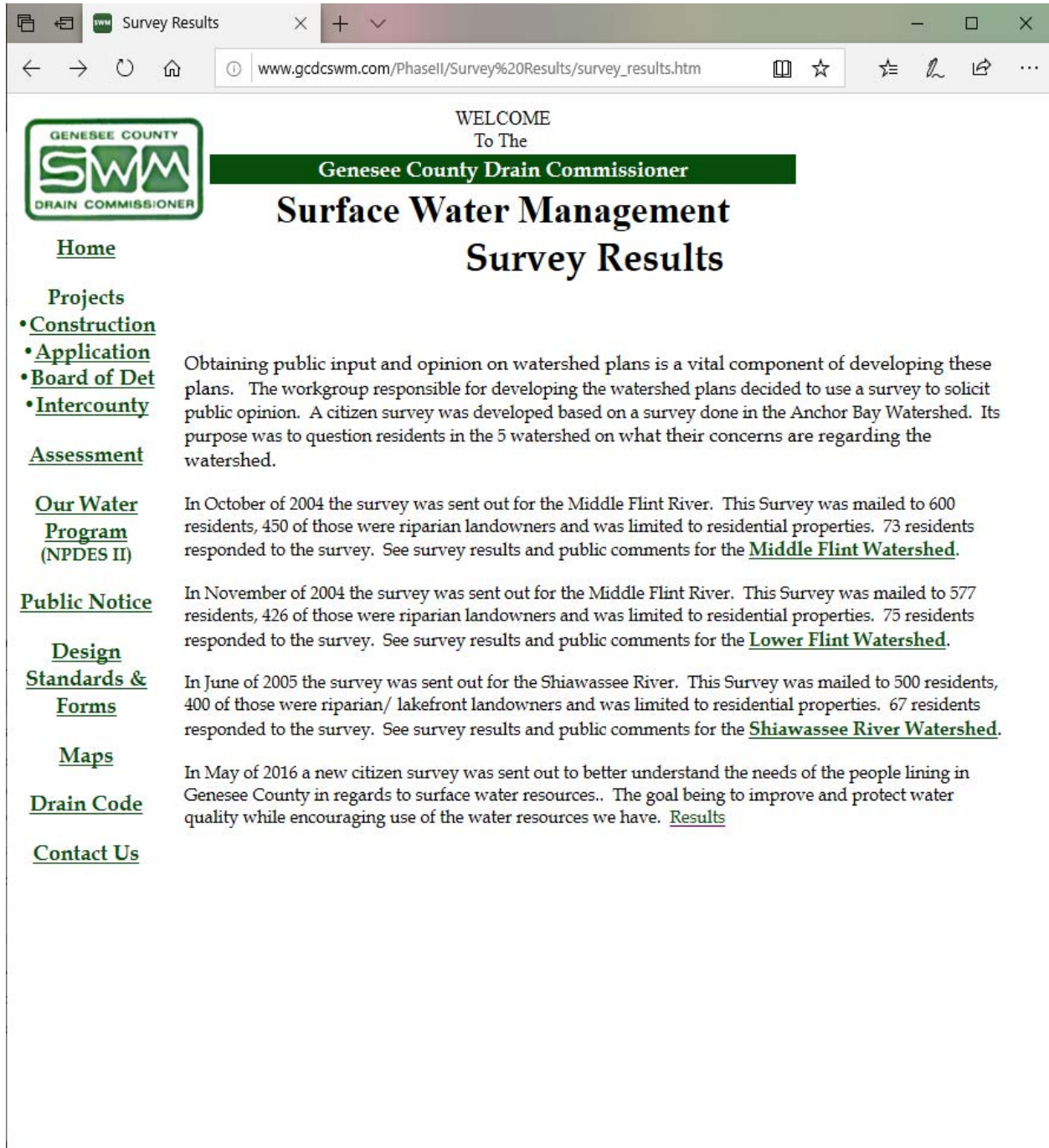
Good Housekeeping Training Video

- Training materials are made available to permittees through www.GCDCSWM.com website
- permittees may do training on their schedule (reported on by each permittee)
- Information provided: Power Point Presentation, Good housekeeping Video, IDEP Tip Card
- Information can be accessed by receiving an email link from GCDC-SWM staff
- Additional training available on website with links to
 - State Industrial Storm Water Program
 - Standard Operating procedures
- Following permittees have requested link
 - Flint Township – Jan 2019
 - Vienna Township- Feb 2019
 - Genesee County Parks and Rec
 - Flushing Schools



Other individual commitments by permittees are reported separately by permittee

Social Survey: Genesee County performed a Social survey in 2005 to see the publics' base line level of knowledge in regards to storm water and the behaviors that lead to pollutants getting into surface water. In 2016 GCDC-SWM received a SAW grant to perform a new social survey and see where we can cross reference information from the original 2005 survey. The Survey was completed in 2016 and results compiled in 2017. Results are available on www.GCDCSWM.com website.



The screenshot shows a web browser window with the URL www.gcdcswm.com/PhaseII/Survey%20Results/survey_results.htm. The page features the Genesee County SWM Drain Commissioner logo on the left and a green header with the text "WELCOME To The Genesee County Drain Commissioner". The main heading is "Surface Water Management Survey Results". A left-hand navigation menu includes links for Home, Projects, Construction, Application, Board of Det, Intercounty, Assessment, Our Water Program (NPDES II), Public Notice, Design Standards & Forms, Maps, Drain Code, and Contact Us. The main content area contains three paragraphs of text, each describing a survey conducted in 2004, 2004, and 2005 for different watersheds: Middle Flint River, Lower Flint Watershed, and Shiawassee River Watershed. Each paragraph includes details about the number of residents surveyed and provides a link to the survey results and public comments.

WELCOME
To The
Genesee County Drain Commissioner

Surface Water Management Survey Results

[Home](#)

[Projects](#)

- [Construction](#)
- [Application](#)
- [Board of Det](#)
- [Intercounty](#)

[Assessment](#)

[Our Water Program \(NPDES II\)](#)

[Public Notice](#)

[Design Standards & Forms](#)

[Maps](#)

[Drain Code](#)

[Contact Us](#)

Obtaining public input and opinion on watershed plans is a vital component of developing these plans. The workgroup responsible for developing the watershed plans decided to use a survey to solicit public opinion. A citizen survey was developed based on a survey done in the Anchor Bay Watershed. Its purpose was to question residents in the 5 watershed on what their concerns are regarding the watershed.

In October of 2004 the survey was sent out for the Middle Flint River. This Survey was mailed to 600 residents, 450 of those were riparian landowners and was limited to residential properties. 73 residents responded to the survey. See survey results and public comments for the [Middle Flint Watershed](#).

In November of 2004 the survey was sent out for the Middle Flint River. This Survey was mailed to 577 residents, 426 of those were riparian landowners and was limited to residential properties. 75 residents responded to the survey. See survey results and public comments for the [Lower Flint Watershed](#).

In June of 2005 the survey was sent out for the Shiawassee River. This Survey was mailed to 500 residents, 400 of those were riparian/ lakefront landowners and was limited to residential properties. 67 residents responded to the survey. See survey results and public comments for the [Shiawassee River Watershed](#).

In May of 2016 a new citizen survey was sent out to better understand the needs of the people lining in Genesee County in regards to surface water resources.. The goal being to improve and protect water quality while encouraging use of the water resources we have. [Results](#)

Other Water Education Efforts throughout the County That Are Not In Table 2

- Audits: GCDC-SWM offers each year one on one site visits between the permittee(s) /agencies and Tetra tech, our consultant to go over their facility, identify any potential issues, prepare and identify a report to the permittee as a means of helping them improve their adherence to the permit requirements.
- For-Mar on the Road: GC Parks and Rec provides free science and nature based programs for k-8 education that meets MI science standards. 5th grade covers water and ecosystems. They have other programs throughout the County and year that touch on surface water and or stewardship.
- Community walking path along river has free standing watershed signage, between Genesee county parks and City of Flushing Park.
- Park provides education on proper disposal of pet waste at the City of Flushing Park walkway.
- There is an Annual River cleanup on the first week of June along the Shiawassee River, organized by a Fenton council members.
- The FRWC coordinates an annual stewardship day that includes cleaning up trash along the river within Genesee and Lapeer counties. Staff from the County and local municipalities including the Drain Office, Parks and Rec, City of Flushing, City of Flint and others assisted with the cleanup by provided staff or garbage removal.
- Flint River Corridor Alliance is a community based organization of Government, non-profit and private sector stakeholders, focusing on the Flint River as it goes through the City of Flint. They have completed the securing of grant money to remove the Hamilton and Fabri dams located within and owned by City of Flint. They have partnered with Genesee County Parks and Rec to facilitate the dam removals. They also sponsor an annual Floatilla on the Flint River and other events promoting the Flint River.
- Genesee County Parks provides education on many subjects including storm water. (**H2 knOw!**). Genesee County, specifically the Parks and rec owns many acres along the Flint River providing defined access for the public. They also provide support for many water programs.
- Household Hazardous Waste: The Our Water program supports this program by promoting it but this program is developed and managed by Genesee County Planning Commission, General Motors, UAW Local 599, Goodwill Industries, 5R Processors and Keep Genesee County Beautiful & several communities participate and/or support this program both financially and with staff or letting program use their property. In the spring and fall there are HHW and electronic waste collections. City of Flint hosts a permanent site at their Water service center (centrally located within Genesee County). A second site moves to a new location around the County. This is either hosted at a school or municipal property.

